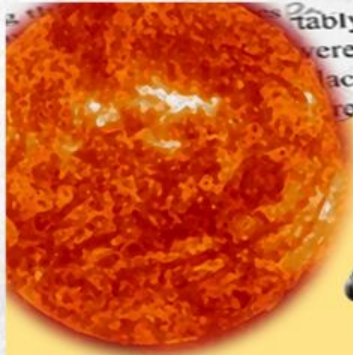


George
ORWELL'S
1984



DOWN WITH
BIG BROTHER



PREVIEW



Author



Novel



Connections



Title: 1984

Author: George Orwell

Genre: Dystopian fiction

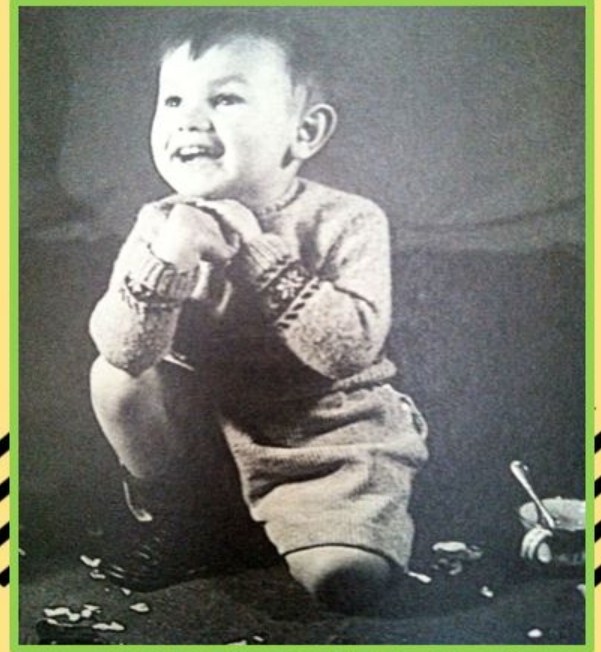
Synopsis



**Why did I select
this novel?**

About the Author

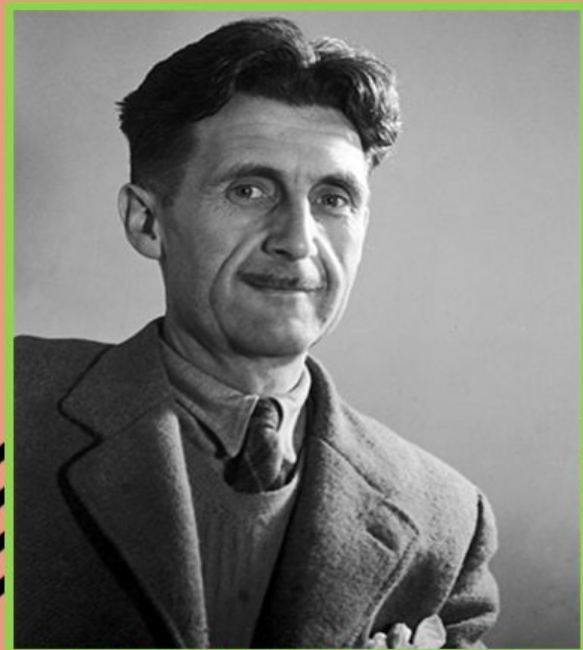
- ❖ Eric Arthur Blair (1903-1950)
- ❖ Born in Motihari, India
- ❖ He was an intellectual child
- ❖ He grew up in poverty
- ❖ First published work at age 11



Childhood

About the Author

- ❖ He joined the India Imperial Police for 5 years
- ❖ Became a teacher
- ❖ Later on, he pursued his childhood dream
- ❖ Worked for BBC



Adulthood

About the Author

- ❖ “Orwellian”
- ❖ Strong political views
- ❖ How language shapes the way we think



Literary Impact

The image shows the front cover of the book '1984' by George Orwell. The cover is a deep red color with a repeating geometric pattern of interlocking lines. At the top, the year '1984' is printed in a large, white, sans-serif font. Below the year is a white icon of a human eye, looking forward. Underneath the eye, the phrase 'BIG BROTHER IS WATCHING YOU' is written in a smaller, white, all-caps sans-serif font. At the bottom of the cover, the author's name 'GEORGE ORWELL' is printed in the same white, all-caps sans-serif font. The book cover is set against a light green background that has a torn paper effect on the right side.

1984



BIG BROTHER IS WATCHING YOU

GEORGE ORWELL

**How does the cover
embody the book?**



Favourite Quote

“ Stupidity was as necessary as intelligence, and as difficult to attain (Orwell 285).”

WHY?

- Paradoxical Statement
- Character → Winston Smith
- Theme → Ignorance vs. Knowledge



Favourite Quote

“ That the choice for mankind lies between freedom and happiness, and that, for the bulk of mankind, happiness was better (Orwell 268).”

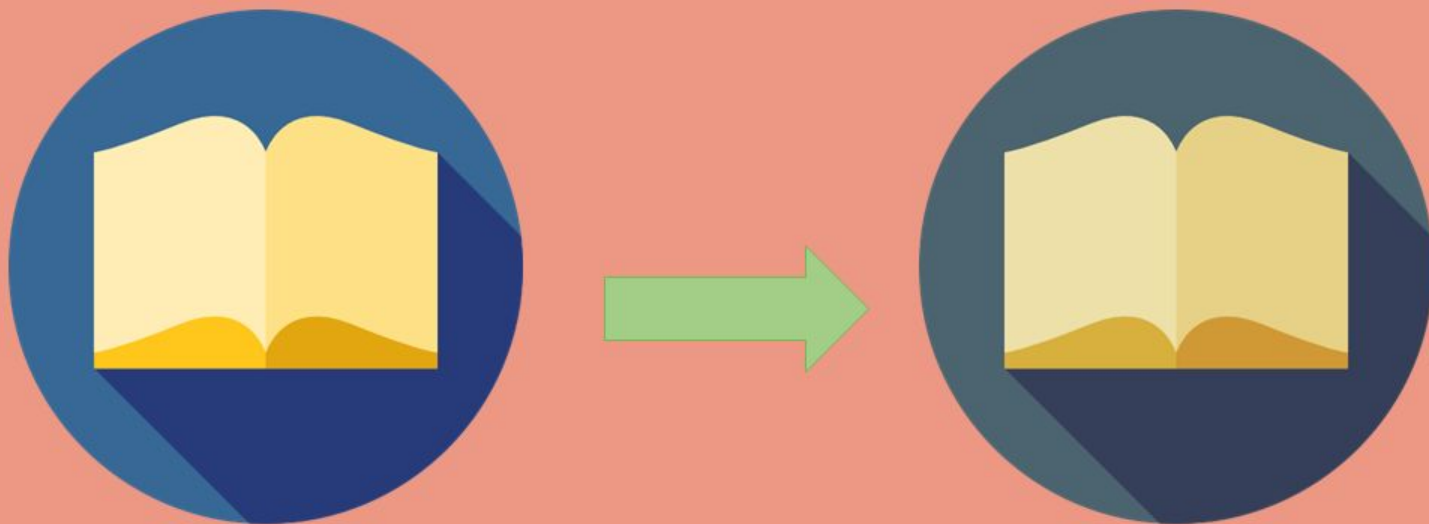
WHY?

- Author's writing style
- direct to the point – makes it clear to readers
- writes to teach



Connections

“ Who controls the past controls the future. Who controls the present controls the past (Orwell 254).”



Connections



Connections

“ Power is in tearing human minds to pieces and putting them together again in new shapes of your own choosing (Orwell 273).”



Connections



Question: Which is worse: mind control or physical control?





**Answer:
BOTH!!!**



WHAT

- A warning

HOW

- Writing to depict the terrifying side of power

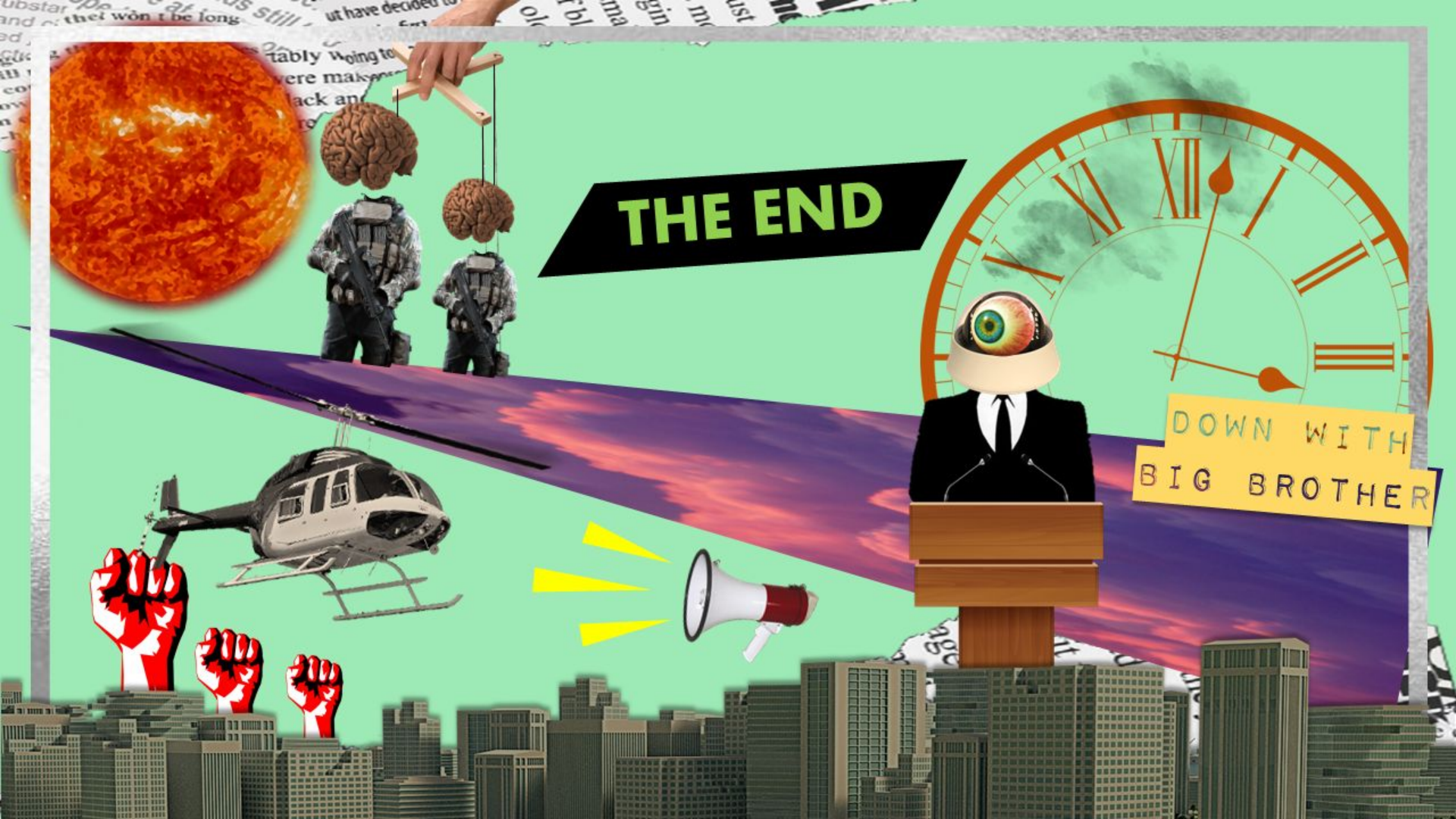
WHO

- The General Audience

WHY

- Explores an undesirable society





THE END

DOWN WITH
BIG BROTHER

